



塑料清洗造粒生产线
PLASTIC WASHING GRANULATING SYSTEM
TURN YOUR WASTE INTO PROFIT

PURUI 普瑞
PLASTICS & RUBBER MACHINERY

成都普瑞高分子工程有限公司
张家港市普瑞塑胶机械有限公司
张家港市普瑞塑料再生设备有限公司

地址: 张家港市锦丰镇锦丰科技创业园B17
Add: Jinfeng Town, Zhangjiagang City,
Jiangsu, China

TEL: +86 512 58962719
FAX: +86 512 58962710

Web: www.purui-china.com

aileen.he@puruien.com

Mobile: 0086 15602292676

PURUI 普瑞
PLASTICS & RUBBER MACHINERY
www.purui-china.com

ABOUT PURUI

PURUI PLASTICS & RUBBER Machinery 有限公司自成立伊始就着力于研究、开发塑料造粒、清洗设备。凭借着 30 年的从业经验以及不懈的努力和追求；从工艺设计到挤出系统的解决方案都已具备了丰富的经验和日臻完善的专业技术。

PURUI 最大限度的承诺，我们向您提供质量可靠、操作简单、价格合理的设备，完善的工艺方案，及时的售后服务。实至名归地成为您最可依赖的合作伙伴。

客户是我们最尊敬的主顾，您的要求在这里将得到全方位的尊重。

PURUI PLASTICS&RUBBER MACHINERY CO.,LTD. Is specialized in the production and research of plastic granulator, plastic washing crushing drying equipment. The main goal of PURUI plastics&rubber machinery is to supply products of a constant high quality. Many years of experience and modern testing facilities guarantee our customers top quality products.

PURUI meet all these requirements with qualified, experienced, at the service of satisfied customers and successful corporate development through sustainable realisation of profits.

Respected customers, we will treat your requirements seriously.

持续创新，合理的价格和一流的质量

Continuous Innovation, Highest Economics and Best Quality

WE CAN DO



Plastic Recycling Machine
With High Effectively Exhausting, Filter
高效排气，过滤塑料造粒机组



Normal
基本型

型号 Model
产量 Output(kg/h)

ML85
180~250

ML100
300~400

ML130
500~600

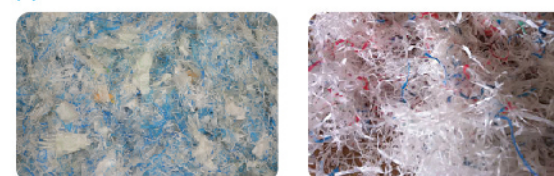
ML160
700~800

ML180
1000~1500

PE

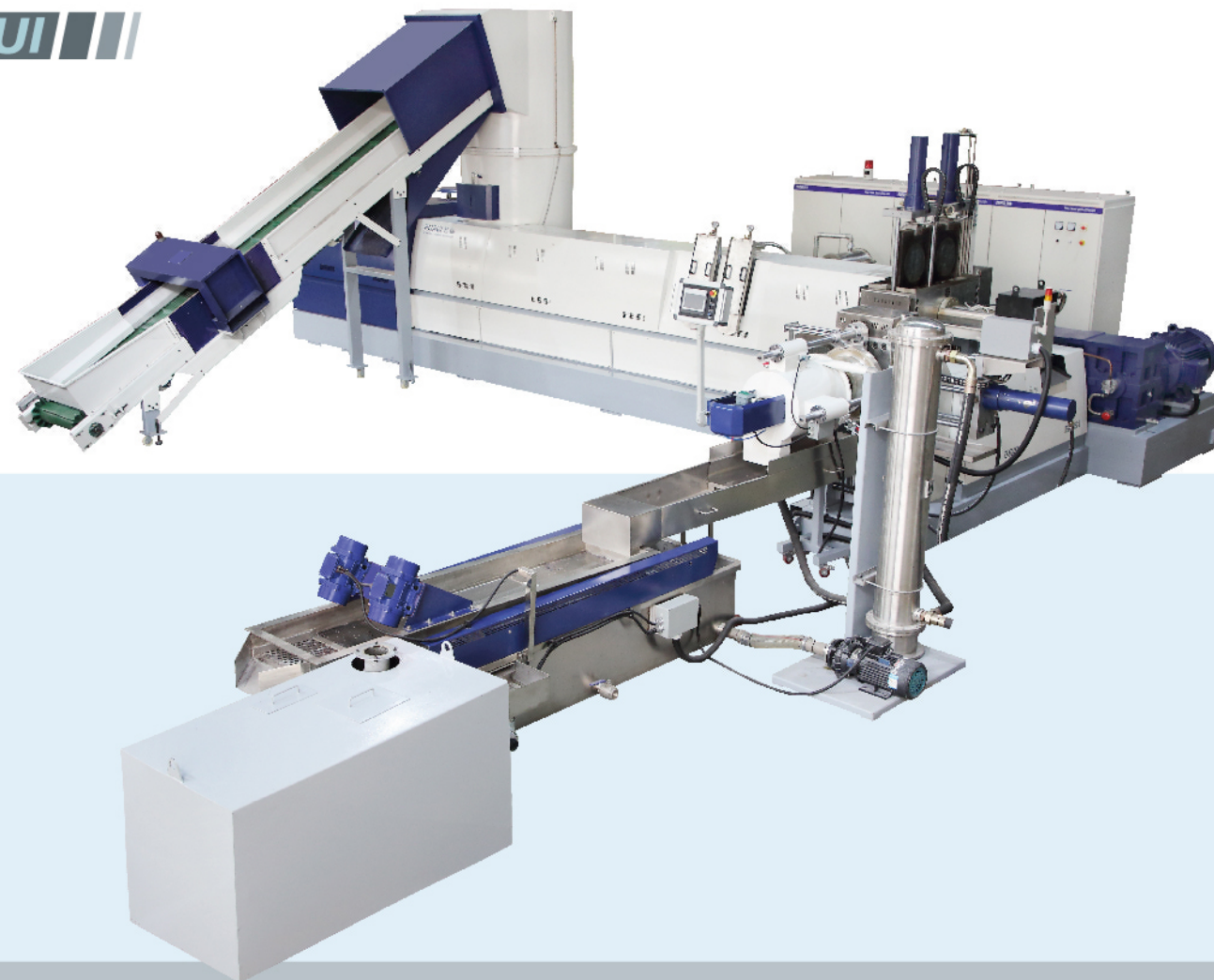


PP



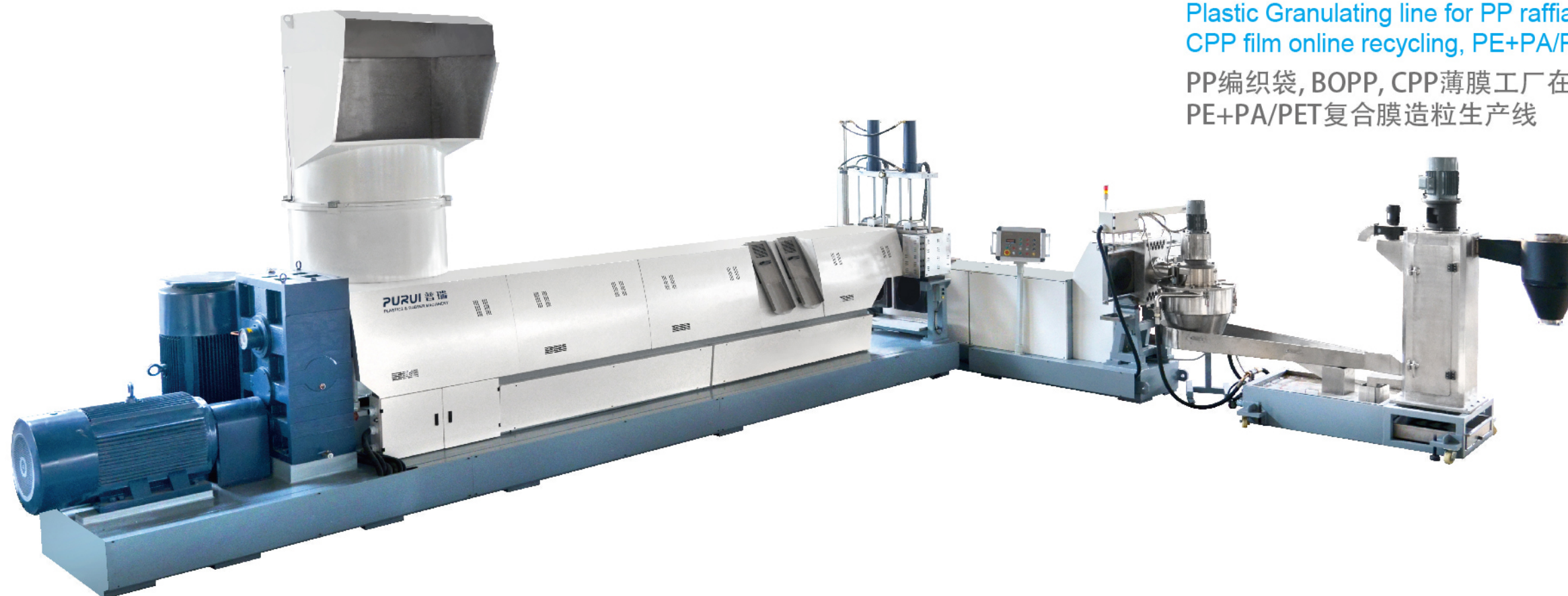
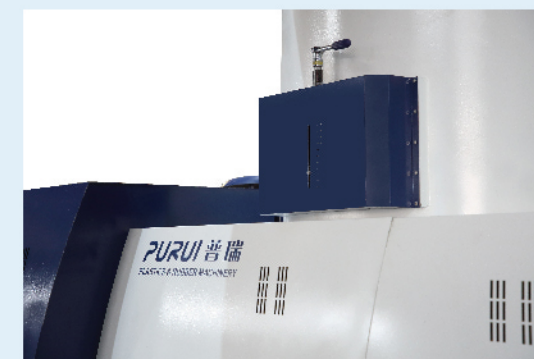
PLA





ML Series Plastic Granulating Line

- A. HDPE,LDPE,LLDPE,PP such like films,bags,flakes,film rollers,stretch film,shrink film,multi-layer film,T-shirt bag cut-offs
- B. Foamed PE,EPS and XPS: rolls, bag, sheet, food container, fruit net, cover
- C. Textile: PP fiber, raffia, silk, yarn, woven bag, jumbo bag



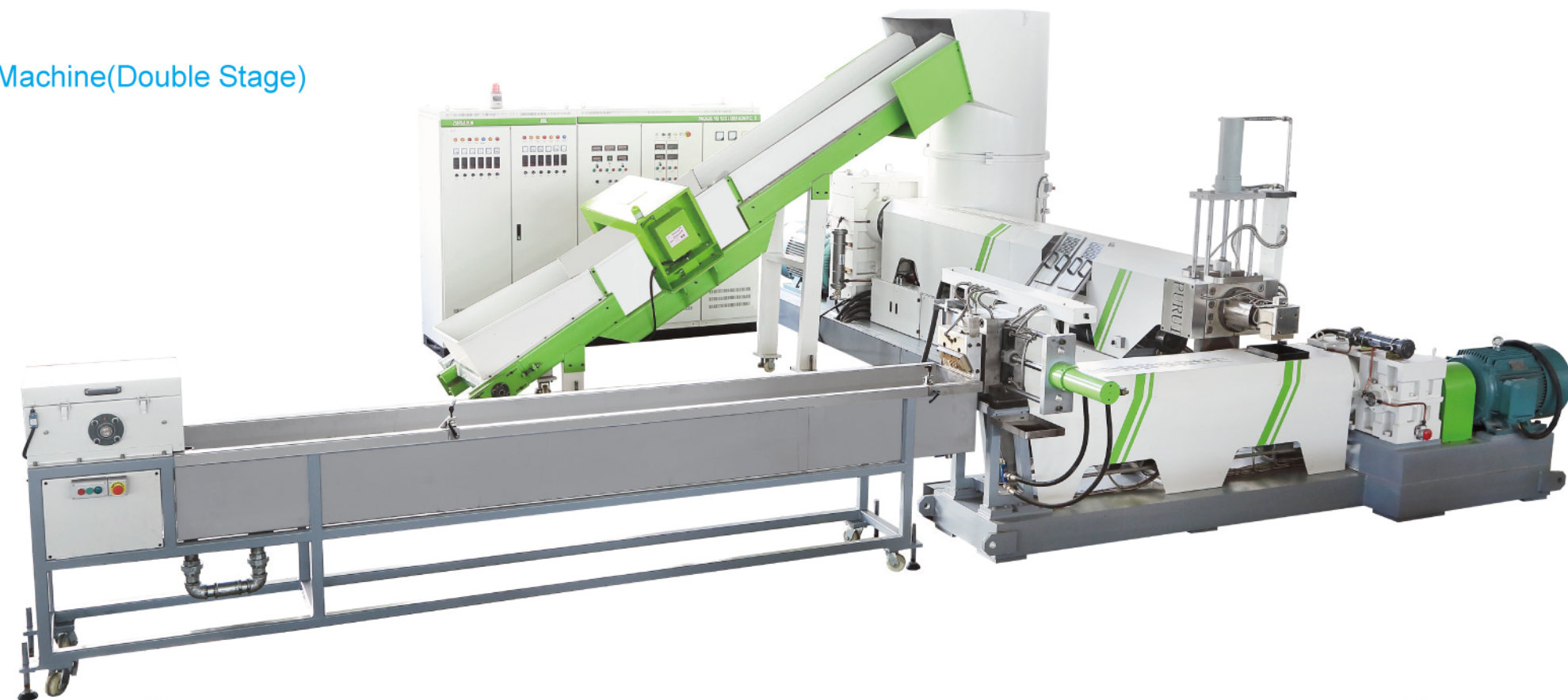
Plastic Granulating line for PP raffia/woven sack,BOPP film,
CPP film online recycling, PE+PA/PET laminated film
PP编织袋, BOPP, CPP薄膜工厂在线回收,
PE+PA/PET复合膜造粒生产线

Plastic granulating line for PET fibers,
PET waste fabrics

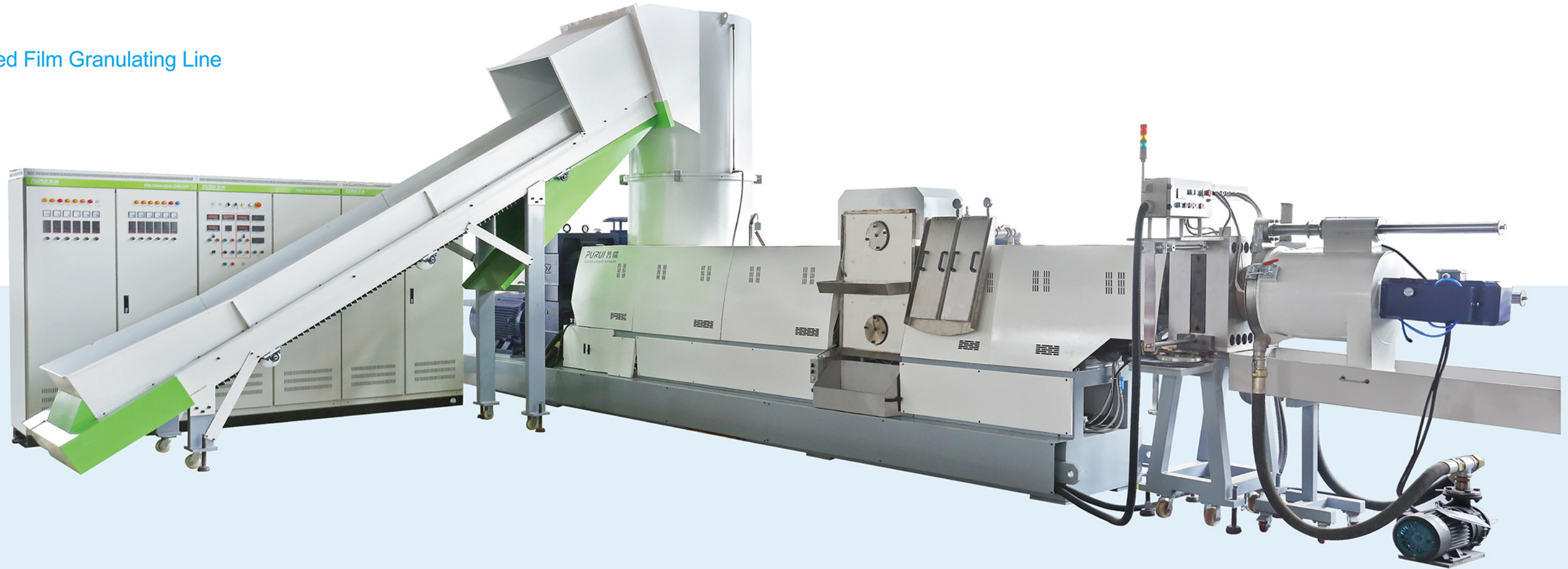
PET化纤+涤纶废布造粒生产线



Spaghetti(Noodle Type)
Strand Pelletizing Recycling Machine(Double Stage)



Heavy Printed Film Granulating Line



Optimised Triple Degassing

Degassing in the cutter compactor takes place preheating and predrying the material.

The optimum screw design (turned to the material to be processed) enables the reverse degassing to be true in the cutter compactor, thus relieving the degassing zone of the extruder

Gas inclusions in the melt are removed in the degassing zone

Only thoroughly melted, filtered and homogenized material can pass the degassing zone of the extruder

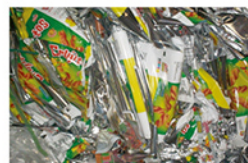
Heavily printed PE film



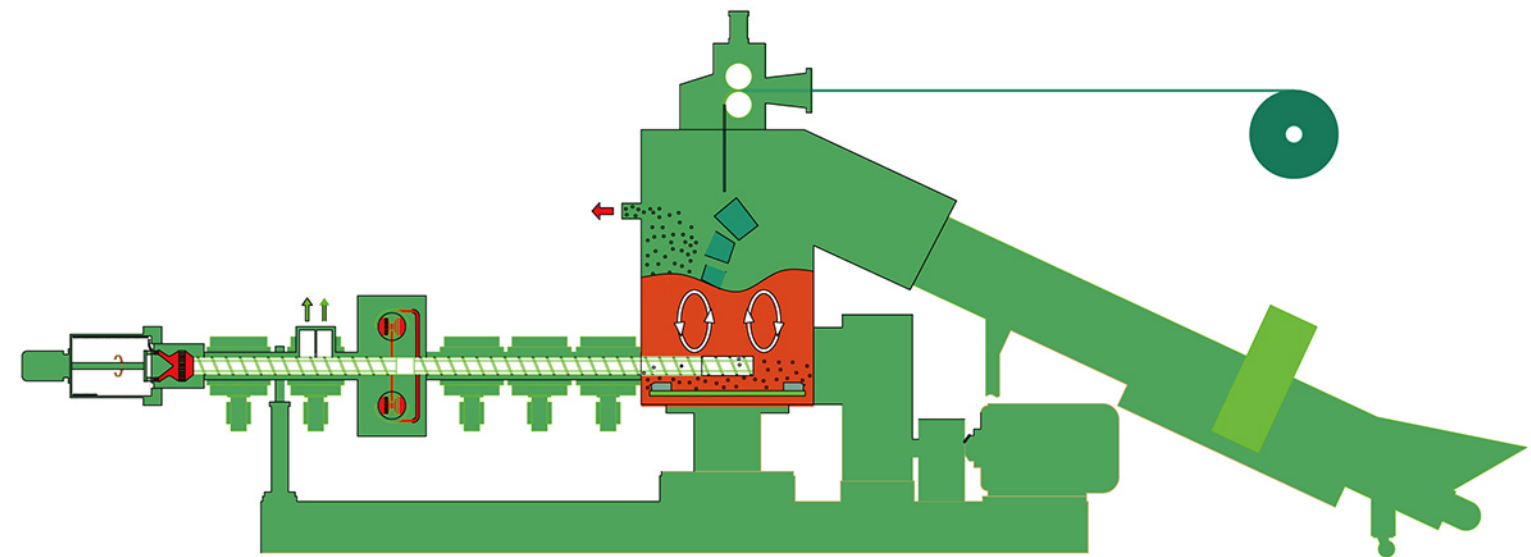
Washed PE film flakes



Metallised BOPP film

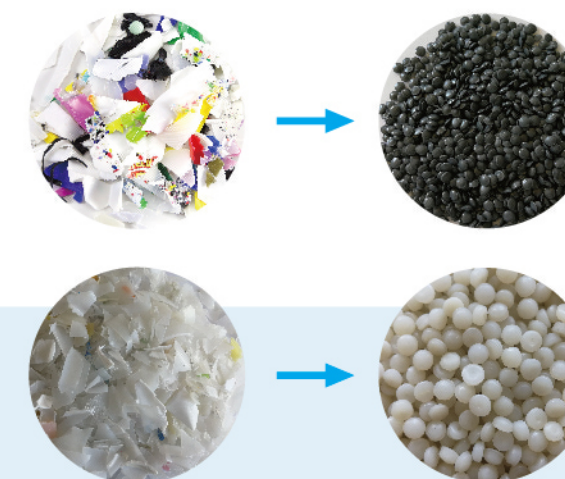
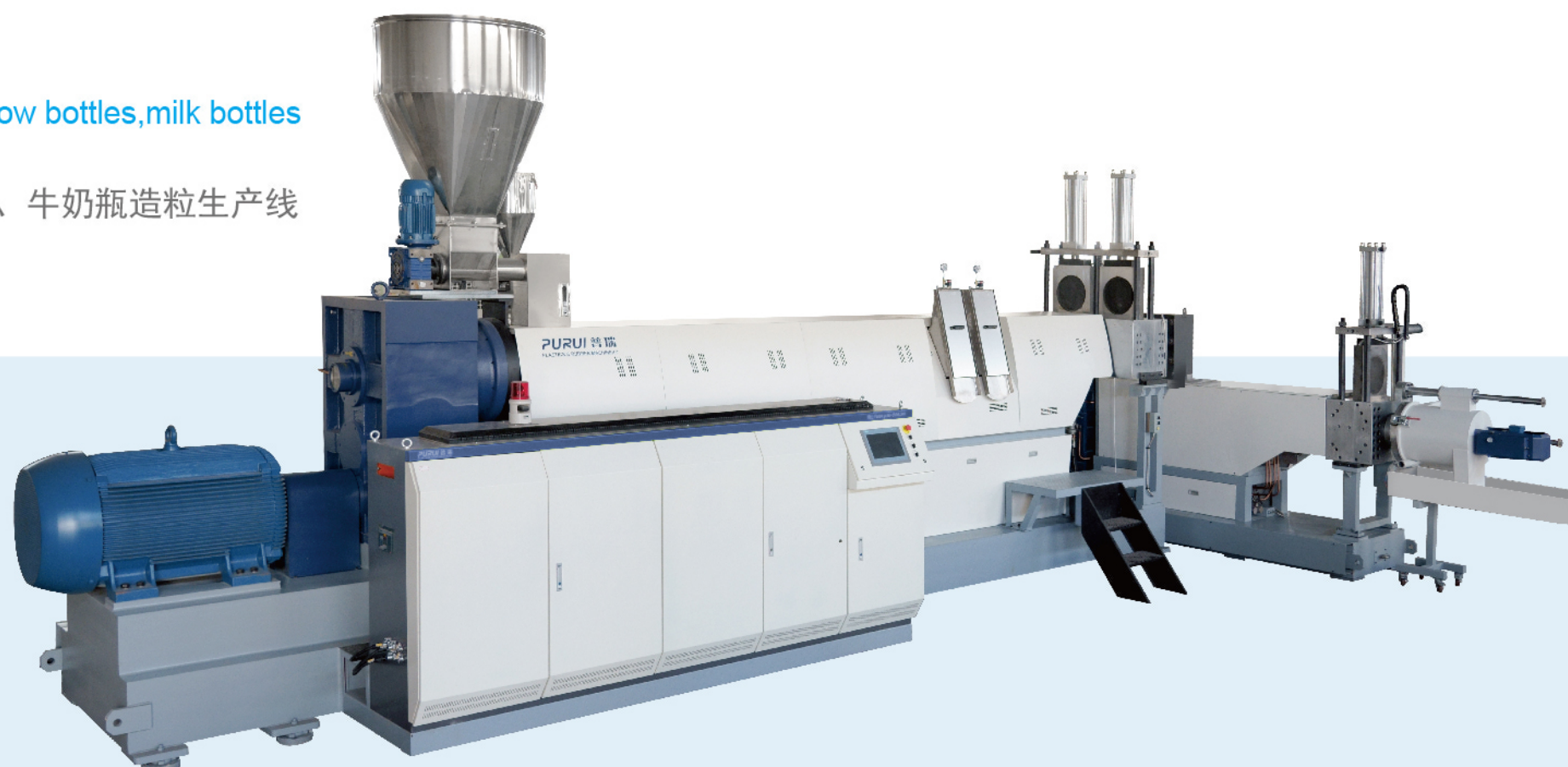


Heavily printed BOPP film



Bucket ,small hollow bottles,milk bottles granulating line

大蓝桶、小中空、牛奶瓶造粒生产线



Application:

The machine is suitable for HDPE thermoplastics, pelletizing method: strand type, water ring die cutting type, air cooling die cutting type.

ABS,PC,PP rigid material granulating machine

ABS,PC,PP硬杂料造粒生产线



型号 Model	SJ100	SJ120	SJ140	SJ150	SJ160	SJ180	SJ200
螺杆直径(mm) Screw diameter	100	120	140	150	160	180	200
长径比L/D L/D	18-42						
螺杆转速(r/min) Rotary speed	10-150						
产量(kg/h) Output	250-350	300-400	500-600	600-800	800-1000	900-1200	1000-1500

Squeezed Film Granulating Line



Plastic Granulating Line for Squeezed Material

挤干料专用造粒机

清洗线上的挤干机出来的料，风送至储料仓，储料仓自动往造粒机加料。

优点:

1. 生产自动化，节省人工
2. 对挤干料的形状没有要求
3. 产量大，能耗低

The squeezed material from squeezer machine in the washing line will be fed into the raw material silo storage by air feeding. Then the squeezed material will be fed to granulating line automatically.

Advantages:

1. Production automation, labor saving
2. There is no requirement for the shape of the squeezed material
3. High output and low energy consumption

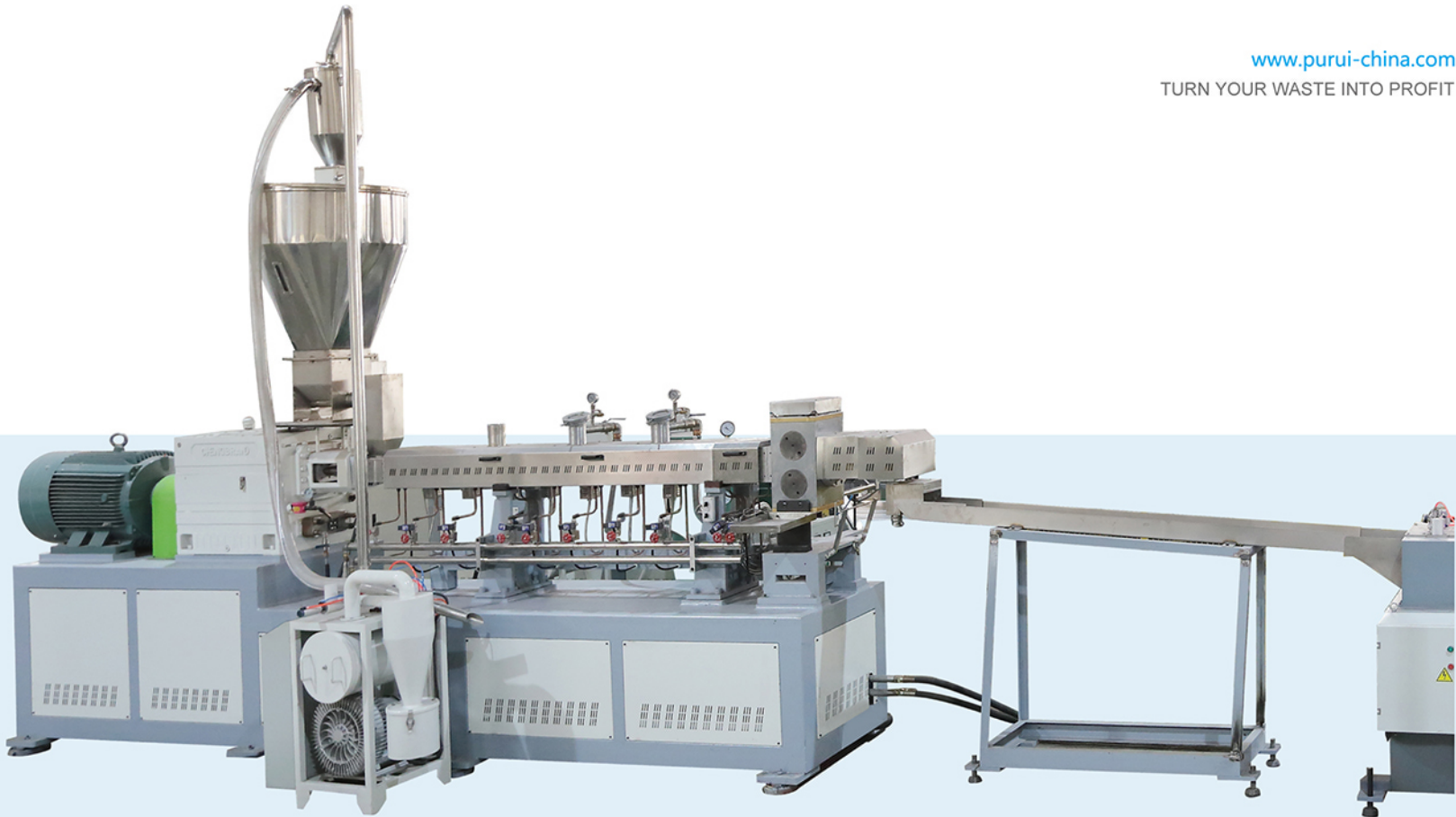


High Torque Co-rotating Twin-screw Extruder

TSSK同向平行双螺杆挤出机

同向平行双螺杆挤出机具有优异的混合性能，良好的自洁性能，灵活的模块化组合的特性，能够适应众多物料体系的不同类型加工。

Parallel co-rotating twin screw extruders have excellent mixing performance, good self-cleaning performance and flexible modular configuration characteristics which make them suitable for processing different types of material.



应用领域：

填充改性	Filling modification	共混改性	Blending modification
碳酸钙	CaCO ₃	热塑性材料/弹性体	Thermoplastic material/Elastomer
滑石粉	Talcum powder	高分子合金	Polymer alloys
硫酸钡	BaSO ₄		
钛白粉	TiO ₂	电缆料	Cable material
陶瓷粉	Ceramic powder	PVC电缆料	PVC cable material
木粉/植物纤维	Wood flour/plant fiber	低烟无卤电缆料	Zero halogen cable material
其他无机填料	Other inorganic filler	PE绝缘料、护套料	PE TR-XLPE, NDH
		PE交联电缆	PE cross-linking cable material
		特种电缆料	Special cable material
增强改性	Reinforce modification		
短玻璃纤维	Short glass fiber		
长玻璃纤维	Long glass fiber		
碳纤维	Carbon fiber		
其他晶须	Other whisker		
母料制备	Preparation of master batch		
碳黑母料	Carbon black master-batch		
色母料	Color master batch		
阻燃母料	Flame-retardant master-batch		
降解母料	Degradation master-batch		
其他特种功能母料	Other special functions master-batch		

TSSK系列同向双螺杆挤出机规格及参数(普通型)
Technical parameter of TSSK series co-rotating twin-screw extruder(normal)

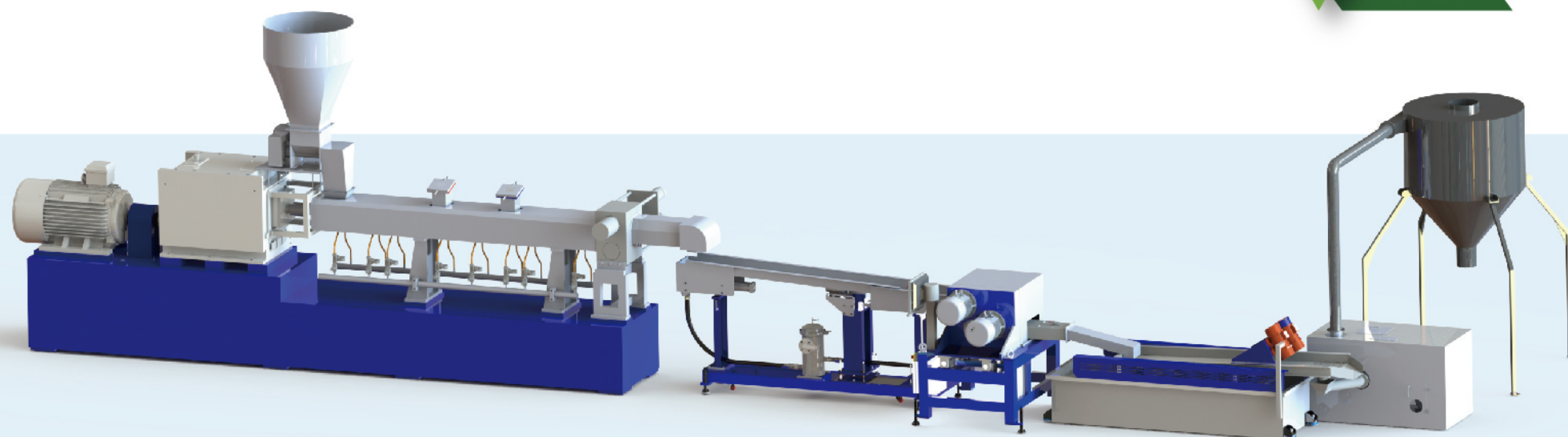
设备型号 Model	TSSK-20	TSSK-30	TSSK-35	TSSK-50	TSSK-65	TSSK-72	TSSK-92
螺杆直径(mm) Screw diameter	21.7	30	35.6	50.5	62.4	71.2	91
螺杆转速(rpm) Rotary speed	600	400	400/600	400/500	400/500	400/500	400/500
主电机功率(kw) Main motor power(kw)	4	11	11/15	37/45	55/75	90/110	220/250
螺杆长径比(L/D) L/D	32-40	28-48	32-48	32-48	32-48	32-48	32-40
生产能力(kg/hr) Capacity(kg/h)	2-10	5-30	10-80	20-150	100-300	300-600	600-1000

TSSK系列同向双螺杆挤出机规格及参数(高扭型)
Technical parameter of TSSK series co-rotating twin-screw extruder(high torque)

设备型号 Model	50B	65B	75B	75D
螺杆直径(mm) Screw diameter	50.5	62.4	71.2	71.2
螺杆转速(rpm) Rotary speed	500/600	500/600	500/600	500/600
主电机功率(kw) Main motor power(kw)	55/75	90/110	132/160	200/250
螺杆长径比(L/D) L/D	28~48	28~48	28~48	28~48
生产能力(kg/hr) Capacity(kg/h)	120~280	180~400	250~650	500~1200

Dried PET bottle flakes & PET lump material granulating machine

干燥后的PET瓶片，PET机头料造粒生产线



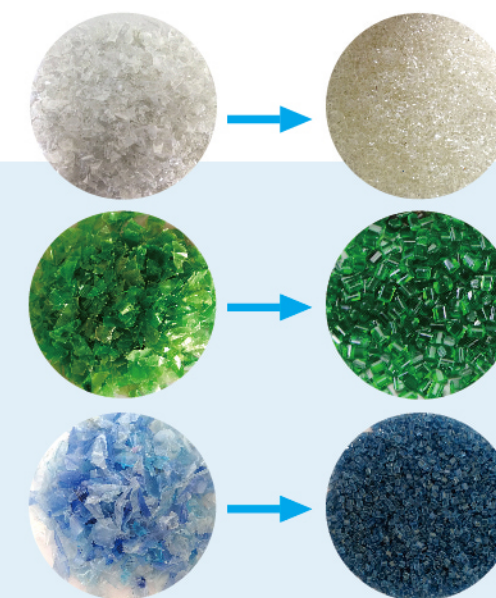
型号 Model
产量 Output(kg/h)

T65
300

T75
600

T95
900

T110
1200

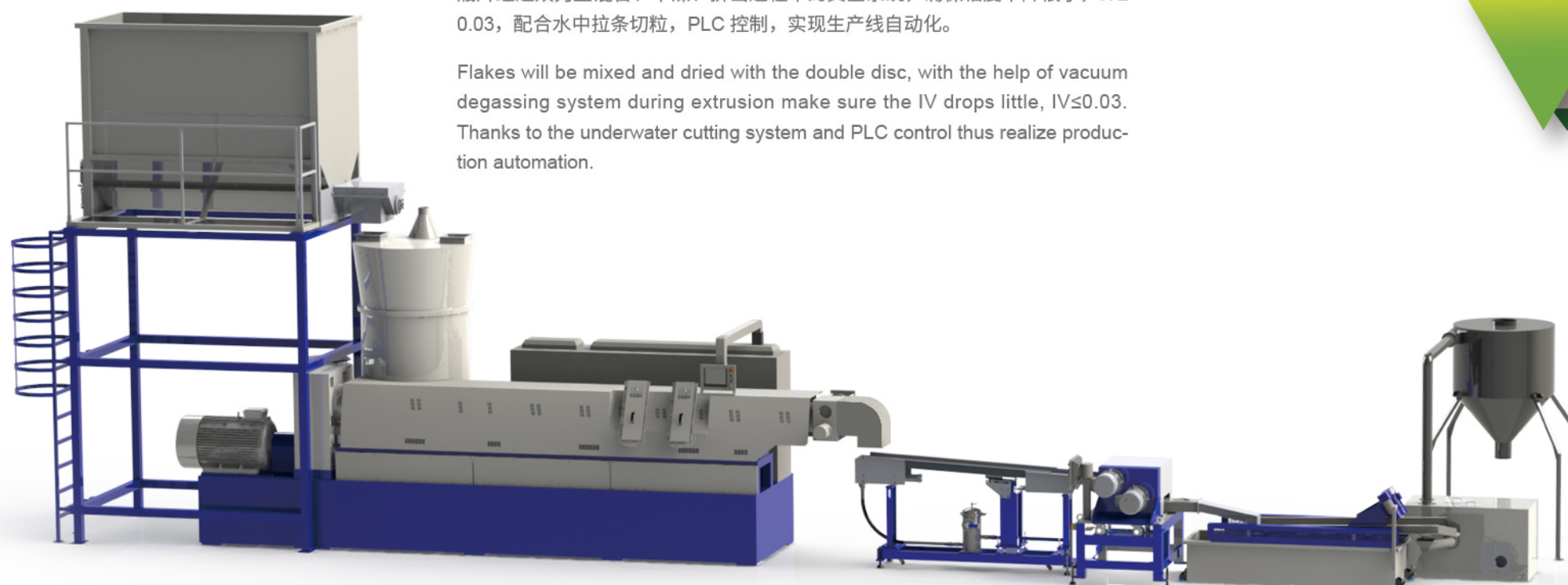


PET pelletizing line for clean washed PET flakes

PET净片造粒生产线

瓶片经过双刀盘混合、干燥、挤出过程中的真空系统，确保粘度下降很小， $IV \leq 0.03$ ，配合水中拉条切粒，PLC 控制，实现生产线自动化。

Flakes will be mixed and dried with the double disc, with the help of vacuum degassing system during extrusion make sure the IV drops little, $IV \leq 0.03$. Thanks to the underwater cutting system and PLC control thus realize production automation.



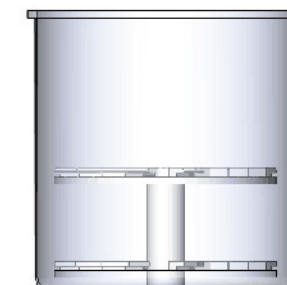
型号 Model
产量 Output(kg/h)

CT130
700

CT160
1000

CT180
1500

不同规格、类型的 PET 瓶片混合均匀并干燥
PET bottle flakes with all kinds of types can be mixed evenly and dried.



PP/PE Film, PP Woven Bag Recycling System

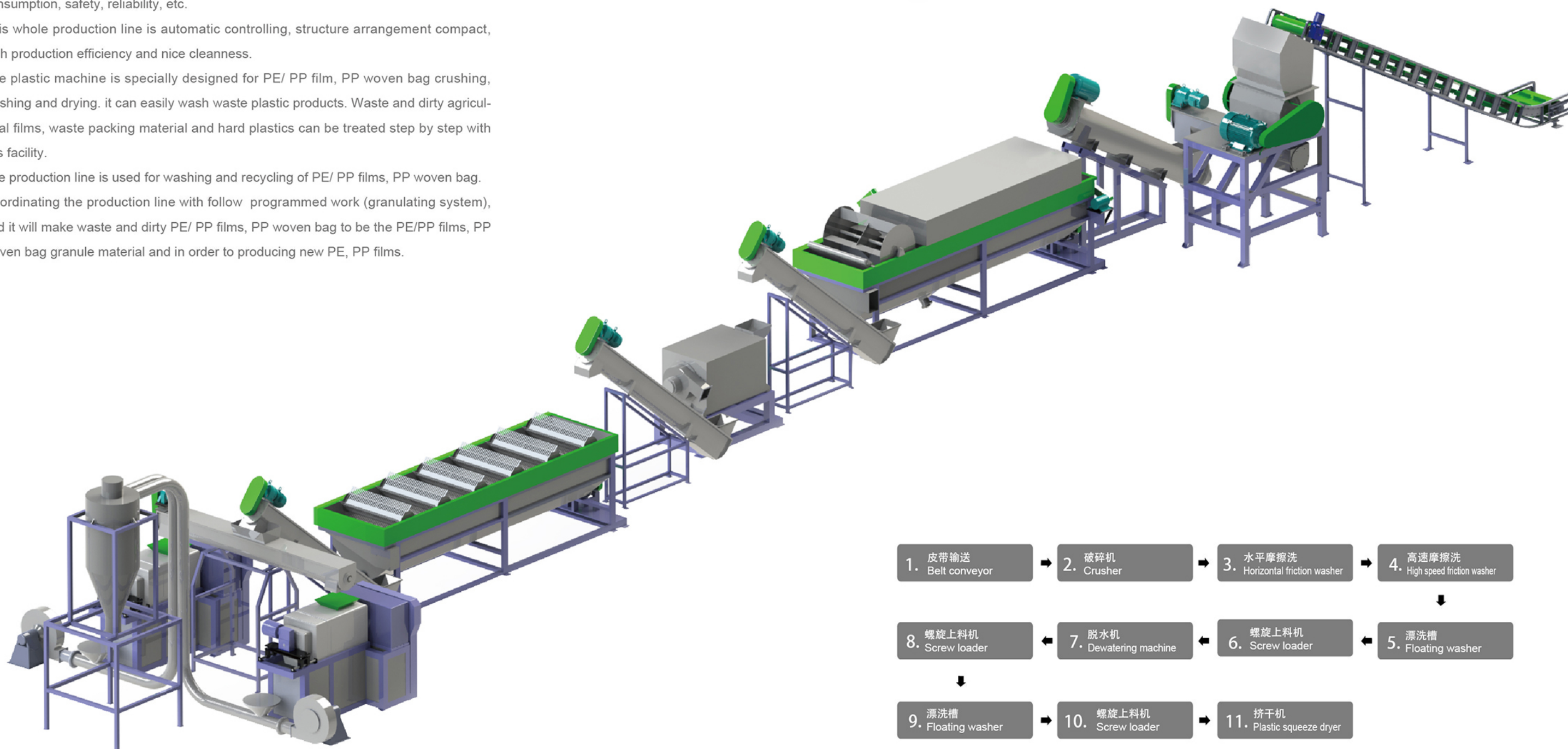
This whole production line is used to crush, wash, dewater and dry PP/PE Film, PP woven bag

It takes the advantages of simple structure, easy operation, high capacity, low energy consumption, safety, reliability, etc.

This whole production line is automatic controlling, structure arrangement compact, high production efficiency and nice cleanness.

The plastic machine is specially designed for PE/ PP film, PP woven bag crushing, washing and drying. it can easily wash waste plastic products. Waste and dirty agricultural films, waste packing material and hard plastics can be treated step by step with this facility.

The production line is used for washing and recycling of PE/ PP films, PP woven bag. Coordinating the production line with follow programmed work (granulating system), and it will make waste and dirty PE/ PP films, PP woven bag to be the PE/PP films, PP woven bag granule material and in order to producing new PE, PP films.



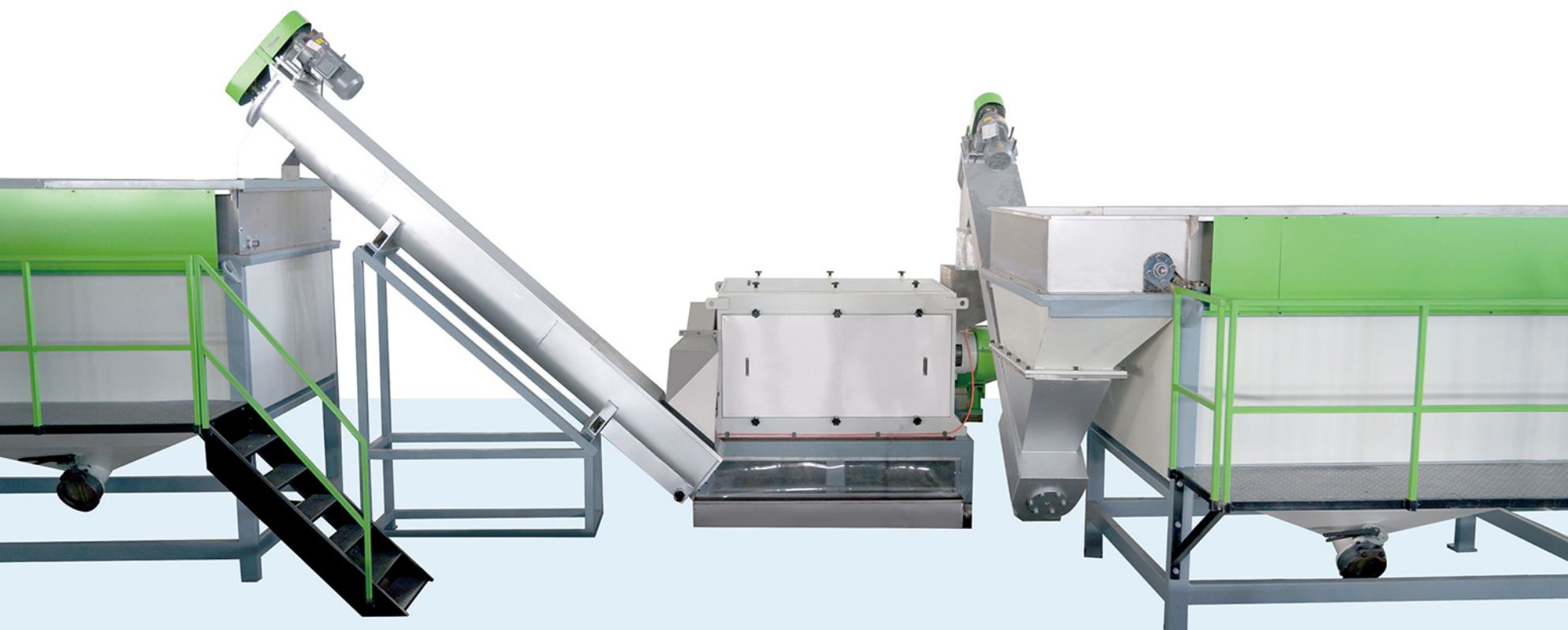
PP/PE Film, PP Woven Bag Recycling System

- 强力有效去除标签纸，漂洗槽自动排渣系统，无需定期清理水槽。
- 漂洗槽的不锈钢链网出料系统，节省了用水量。
- 挤干机的含水率：5% 以下。



- Strong effectively remove label paper, automatic discharge system of floating washing tank, no need to clean the washing tank regularly.
- The stainless steel chain loading system saves the water
- The moisture for squeeze dryer is less than 5%

PP/PE Film, PP Woven Bag Recycling System

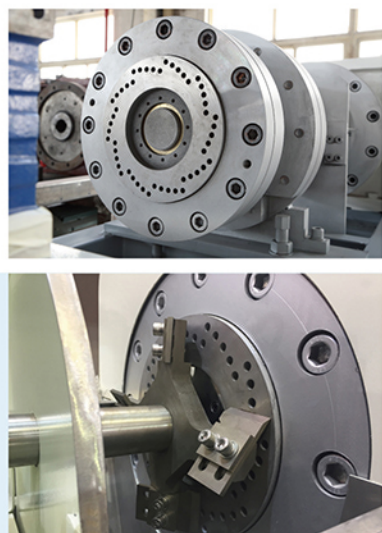


- The dewatering machine removes dirty water, soil and pulp from previous floating washing tank, so as to ensure the water in the subsequent washing tank is clean thus improve the cleaning effect.
- The speed of the dewatering machine is 2000rpm, running smoothly and low noise.
- The total output of two squeezer dryers: 1500-1800kg/hr
- The final moisture is $\leq 5\%$

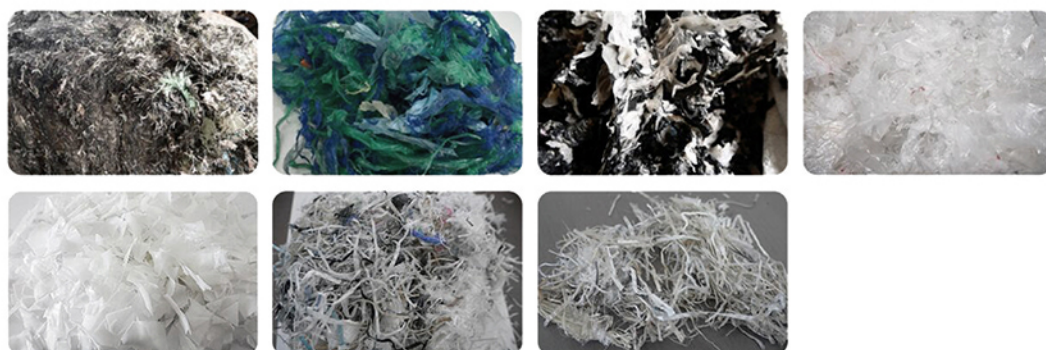
- 脱水机去除前道漂洗槽的脏水，泥沙，纸浆等，保证后续漂洗槽里的水是干净的，提高清洗效果。
- 脱水机转速 2000rpm，运转平稳，噪音低。
- 两台挤干机产量达到 1500-1800kg/hr
- 干燥度 $\leq 5\%$



Plastic Squeeze Dryer



Materials Before Processing



Materials After Processing

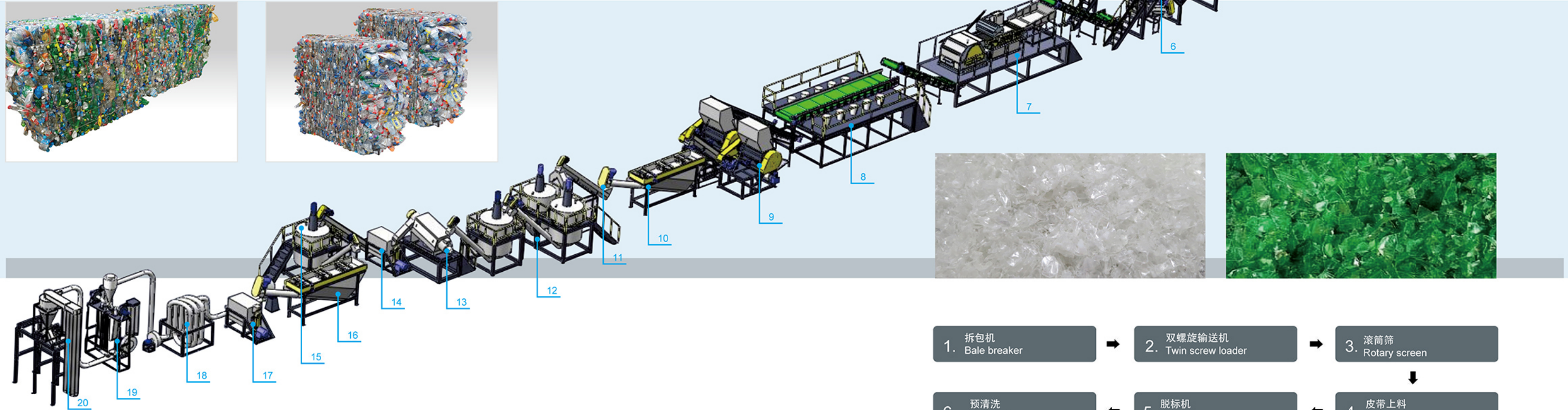


After plastic recycled film materials are washed, the moisture is usually retain over 30%. Therefore, our superior design team specially developed a squeezer to meet customers' needs. Through this machine, water and volume of the materials can be squeezed to increase the quality of the pellets and the efficiency of the extruders. The moisture after squeeze dryer will be lowered down to 1-3%

Model	NG300	NG320	NG350
Output(kg/hr)	500	800	1000

PET Recycling System

After many years of development, our systematical equipment production line and overall technical tread have become mature, with choice to make according to the different requirements of customers. We use the mode of modularity to arrange smartly according to the different characteristics of recycled bottle all over the world, to achieve the best production and lowest input.



Production Consumption

Items	Average Consumption Per Ton Flakes
Electricity (kwh)	170
Steam(kg)	510
Washing Detergent (kg/ton)	5
Water	2

PET Flake Quality Reference Table

Moisture Content	<0.9%	Label	<19ppm
PVC	<49ppm	Variegated tablets	<28ppm
Glue	<10.5ppm	PH	(Neutral)
PP/PE	<19ppm	Total impurity	<100ppm
Metal	<18ppm	Flake size	12mm, 14mm (or according to customer needs)

Technical parameters of PET recycling system

Capacity (kg/h)	Power Installed (kW)	Required Area (m2)	Manpower	Steam Volume (kg/h)	Water Supply (m3/h)
1000	490	730	5	510	2.1
2000	680	880	6	790	2.9
3000	890	1020	7	1010	3.8



